



14 T Pick and Carry Crane

Our Hydra Cranes are built safe, strong and sturdy for tough Africa conditions, are uncomplicated to use and offer the best safety features as standard. Toma Equipment supports all its cranes with qualified support personnel and extensive spare parts availability.



**3 PIECE
BOOM
10m**

**CRANE
DEVELOPED
TRANSMISSION**

SAFE | STRONG | STURDY

HYDRA 14



Lifting Capacity (Free on wheels)
14 Tonnes



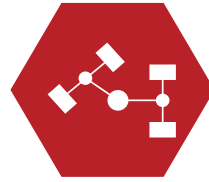
Brakes

Service
Pneumatically assisted hydraulic brakes. Front and rear brakes are actuated through a single pedal

Parking
Parking brake mechanically actuated through rear wheels



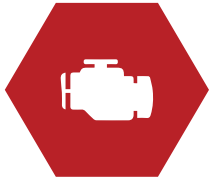
Operating Weights (Total)
11200 Kilograms. (For 3 Part – 10.07 Metres.)



Steering

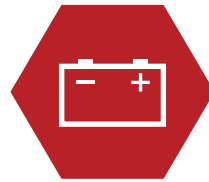
Articulated power steering, hydraulically controlled through two double acting jacks Up to 56° on either side 6.5 m

Turning Radius 6.5m with Lock to Lock Speed 6-10 Seconds



Engine

Simpson S-433, Four Cylinder, Water Cooled Diesel Engine, Water Cooled Diesel Engine Rated power 50 BHP @ 2200 RPM, BS-III (CEV) Emission norms.



Electrical System

12V. Negative earth with 35 Amp. Alternator and 88 Amp hr. battery



Transmission

Heavy duty transmission developed specially for crane application. Constant Mesh, helical teeth gearbox coupled with direct axle. 8 Forward & 2 reverse speeds with high and low selector lever. Travel Speed 29 Km/h - restricted as per safety norms (without load) Creep Speed 1.9 Km/h - Ideally suited for crane operations (with load)

Clutch
Single plate, heavy duty dry friction type clutch plate especially designed for crane application

Axles
Front & rear axles is rigidly mounted on the chassis

Drive
Two wheel Drive with Top Speed (No Load on Smooth Surface) of 29 KMPH or 1.9KMPH Creep Speed with Load



Telescopic Boom

Telescoping Heavy duty, Three part box type hydraulically operated Cycle ranges and times

Telescoping Out 9-12 Seconds, In 7- 9 Seconds

Boom Luffing Range 2° to + 60°

Boom Luffing Time Lowering 14-18 Seconds

Boom Luffing Time Raising 18-22 Seconds



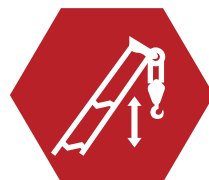
Hydraulic System

Main Pump
Vane type main hydraulic pump

Valve Bank
Four spools control valve with built in pressure relief valve for precision handling

Filtration
Suction line has 100 mesh size strainer while return line is fitted with 25 micron full flow filter

Cylinders
Two double acting lift cylinders, two double acting steering cylinders and one double acting extension cylinder



Hoist

Winch (12T Line Pull) is driven by hydraulic motor employing 4 falls of 13 mm diameter non rotating rope and fitted with self-adjusting hook block

Hoist Speed
55 Metres./Min. (Single Line speed)

SPECIFICATIONS

HYDRA 14



Tyres

Size
Front 10.00 x 20 – 16 PR (4 Nos.) Inflation Pressure 110-115 PSI
Rear 13.00 x 24 – 12 PR (2 Nos.) 35 PSI With Water Ballasted

Track
Front Wheel Track 1930mm to Centre of twin wheels
Rear Wheel Track 1570mm to Centre of wheels



Optional Equipment

Fly jib 2.3 m.
Steering Wheel steering in lieu of lever type
Over Hoist hydraulic cut-off
Fire extinguisher
Beacon Light
Spare Wheel
Air Conditioning
Wheel Chocks
25% Tint Windows
Tool/ Sling Box

We offer a full Range of certified standard slings, beams, grabs and lifting attachments as well as able to produce customised solutions for your application



Fluid Capacities

Fuel Tank: 45.00 Litres.
Hydraulic Tank: 90.00 Litres.
Engine: 8.00 Litres.
Axle reduction: 2.45 Litres



Standard Equipment

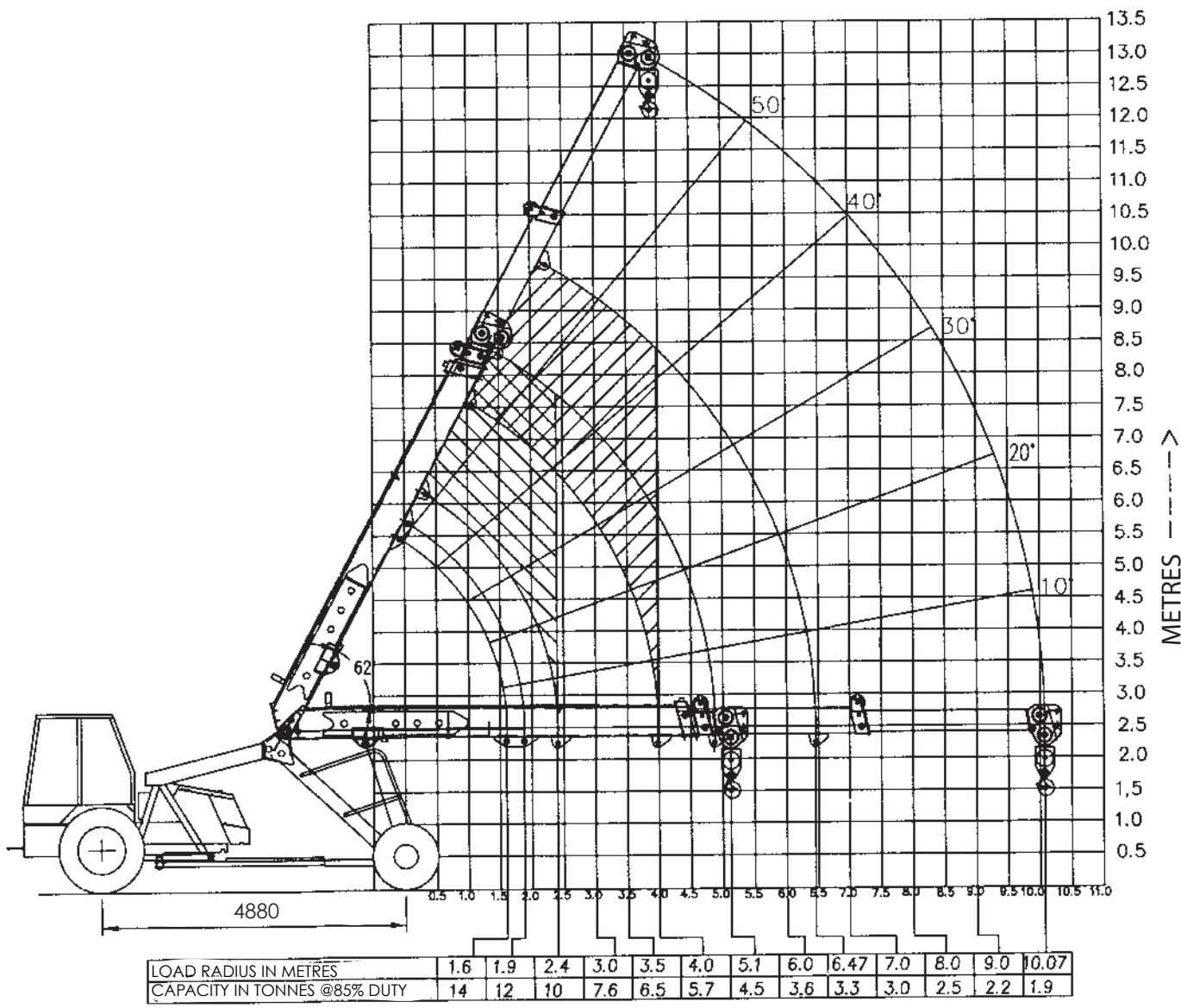
All Weather Cabin
Front Bumper tyre protector
Turn & Reverse Lights
Front and rear work lights.
Reflectors Front & rear view mirror.
Tool kit.
Rear View Mirror
Wiper motor
Gauges
Water Temperature
Engine oil pressure
RPM meter cum hour recorder



Standard Safety Features

Avalon Load Moment Indicator for Pick & Carry Cranes - KOPS + CC
Audio overload indication
Hose failure protection
Safety brakes on hoist
Cylinder guards
Rope Compensation for auto levelling
Reverse Hooter

SAFE | STRONG | STURDY
HYDRA 14



YouTube Toma Equipment

@tomaequipment

www.toma.co.za

LIFTING CAPACITY

HYDRA 14 SAFE | STRONG | STURDY