



# 12 T Pick and Carry Crane

Our Hydra Cranes are built safe, strong and sturdy for tough African conditions, are uncomplicated to use and offer the best safety features as standard. Toma Equipment supports all its cranes with qualified support personnel and extensive spare parts availability.

CRANE  
DEVELOPED  
TRANSMISSION

3 PIECE  
BOOM  
8m

SAFE | STRONG | STURDY

# HYDRA 12

[www.toma.co.za](http://www.toma.co.za)

**Lifting Capacity** (Free on wheels)

12 Tonnes

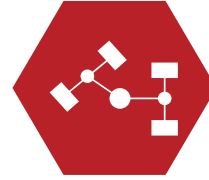
**Brakes**

Service  
Pneumatically assisted hydraulic brakes. Front and rear brakes are actuated through a single pedal

Parking  
Parking brake mechanically actuated through rear wheels

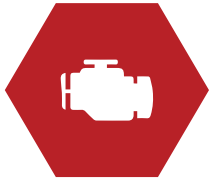
**Operating Weights** (Total)

10750 Kilograms. (For 3 Part – 10.07 Metres.)

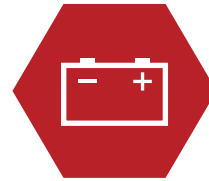
**Steering**

Articulated power steering, hydraulically controlled through two double acting jacks Up to 56° on either side 6.5 m

Turning Radius 6.5m with Lock to Lock Speed 6-10 Seconds

**Engine**

Simpson S-433, Four Cylinder, Water Cooled Diesel Engine or equivalent Escorts E4.286 Four Cylinder, Water Cooled Diesel Engine Rated power 50 BHP @ 2200 RPM, BS-III (CEV) Emission norms.

**Electrical System**

12V. Negative earth with 35 Amp. Alternator and 88 Amp hr. battery

**Transmission**

Heavy duty transmission developed specially for crane application. Constant Mesh, helical teeth gearbox coupled with direct axle. 8 Forward & 2 reverse speeds with high and low selector lever. Travel Speed 29 Km/h - restricted as per safety norms (without load) Creep Speed 1.9 Km/h - Ideally suited for crane operations (with load)

Clutch  
Single plate, heavy duty dry friction type clutch plate especially designed for crane application

Axles  
Front & rear axles is rigidly mounted on the chassis

Drive  
Two wheel Drive with Top Speed (No Load on Smooth Surface) of 29 KMPH or 1.9KMPH Creep Speed with Load

**Telescopic Boom**

Telescoping Heavy duty, Three part box type hydraulically operated Cycle ranges and times

Telescoping Out 9-12 Seconds, In 7- 9 Seconds

Boom Luffing Range 2° to + 60°

Boom Luffing Time Lowering 14-18 Seconds

Boom Luffing Time Raising 18-22 Seconds

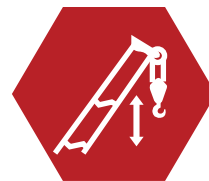
**Hydraulic System**

Main Pump  
Vane type main hydraulic pump

Valve Bank  
Four spools control valve with built in pressure relief valve for precision handling

Filtration  
Suction line has 100 mesh size strainer while return line is fitted with 25 micron full flow filter

Cylinders  
Two double acting lift cylinders, two double acting steering cylinders and one double acting extension cylinder

**Hoist**

Winch (10T Line Pull) is driven by hydraulic motor employing 4 falls of 13 mm diameter non rotating rope and fitted with self-adjusting hook block

Hoist Speed  
55 Metres./Min. (Single Line speed)

# SPECIFICATIONS

## HYDRA 12



### Tyres

#### Size

Front 10.00 x 20 – 16 PR (4 Nos.) Inflation Pressure 110-115 PSI

Rear 13.00 x 24 – 12 PR (2 Nos.) 35 PSI With Water Ballasted

#### Track

Front Wheel Track 1930mm to Centre of twin wheels

Rear Wheel Track 1570mm to Centre of wheels



### Optional Equipment

Fly jib 2.3 m.

Steering Wheel steering in lieu of lever type

Over Hoist hydraulic cut-off

Fire extinguisher

Beacon Light

Spare Wheel

Air Conditioning

Wheel Chocks

25% Tint Windows

Tool/ Sling Box

We offer a full Range of certified standard slings, beams, grabs and lifting attachments as well as able to produce customised solutions for your application



### Fuel Capacities

Fuel Tank: 45.00 Litres.

Hydraulic Tank: 90.00 Litres.

Engine: 8.00 Litres.



### Standard Equipment

All Weather Cabin

Front Bumper tyre protector

Turn & Reverse Lights

Front and rear work lights.

Reflectors Front & rear view mirror.

Tool kit.

Rear View Mirror

Wiper motor

Gauges

Water Temperature

Engine oil pressure

RPM meter cum hour recorder



### Standard Safety Features

Avalon Load Moment Indicator for Pick & Carry Cranes - KOPS + CC

Audio overload indication

Hose failure protection

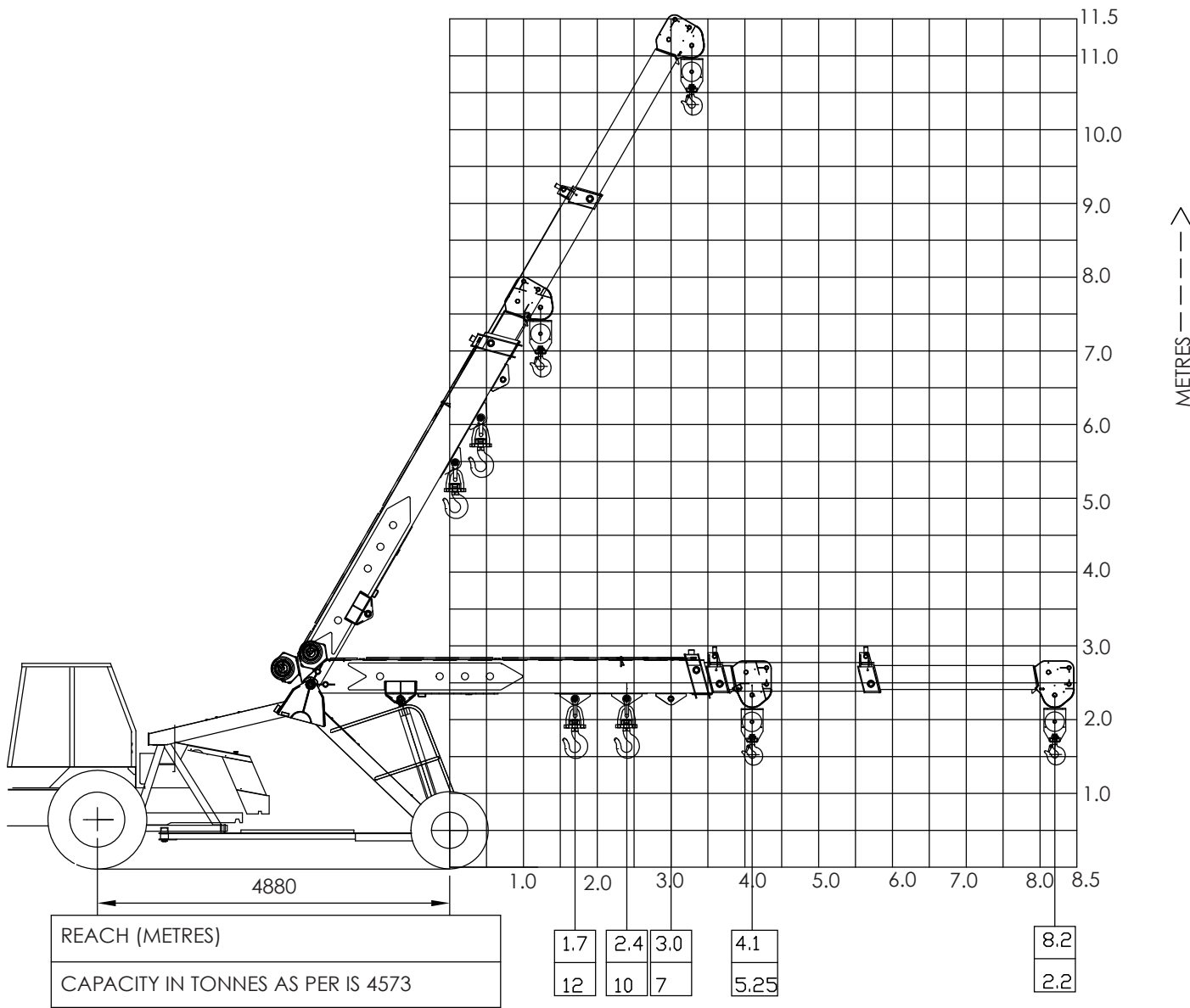
Safety brakes on hoist

Cylinder guards

Rope Compensation for auto levelling

Reverse Hooter

**SAFE | STRONG | STURDY**  
**HYDRA 12**



 **Toma Equipment**  
 **@tomaequipment**  
[www.toma.co.za](http://www.toma.co.za)

# LIFTING CAPACITY

## HYDRA 12 SAFE | STRONG | STURDY