



New Generation Pick & Carry Crane

Our NextGen Pick and Carry Cranes are built safe, steady and sturdy for on and off road tuff Africa conditions, are uncomplicated to use and offer the best safety features as standard. Toma Equipment supports all its cranes with qualified support personnel and extensive spare parts availability.

4 PIECE
BOOM
18m

14T

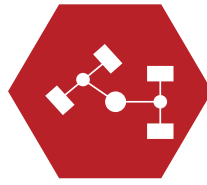
75%
STABILITY
RATING

SAFE | STRONG | STURDY

4x4 CITI F15



Lifting Capacity (Free on wheels)
14 Tonnes



Steering
Power steering through orbital with twin hydraulic double acting cylinders having 40° articulation on either side

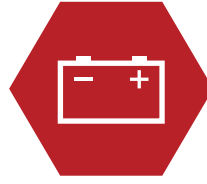
Turning Radius of 7.2m



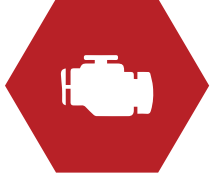
Operating Weights
Total
15315kg (for 3 Part - 15.8 Metres.)

Front Axle
6315kg

Rear Axle
9000kg



Electrical System
24V, DC



Engine
Diesel Engine Volvo-Eicher make model E 483 TCIC , turbo charged and water cooled

Rated Power
101 HP@2400 rpm, BS-III (CEV) Emission norms



Telescoping Boom
Telescoping Heavy duty, 4 part boom, and 3 part hydraulically powered & fully synchronized. 4th part power extended and manually pinned for safety



Transmission
Heavy duty transmission Synchromesh gearbox with auxiliary gearbox, 10 forward and 2 reverse speeds



Hoist
Heavy Duty Winch is hydraulically operated with 4 falls of 13 mm diameter non rotating rope with built in safety brakes and fitted with self-adjusting hook block

Clutch
Hydraulically operated, heavy duty, dry friction cera-metallic clutch plate with diaphragm type pressure plate

Axles
Front axle is rigidly mounted on the chassis and rear drive axles mounted with 2 semi elliptical springs

Drive
4 or 2 wheel drive with selector
Max on Road Travel Speed 40 Kmph
Unladen

Gradeability 40% (Unladen)



Tyres
Size
Front and Rear 11.00 x 20 – 16 PR (4 Nos.)
Inflation Pressure 110-115 PSI

Track
Front and Rear Wheel Track 1825mm to Centre of twin wheels

Wheel Base
3950mm



Hydraulic System
Main Pump
Vane pump directly driven from P.T.O.

Valve Bank
Control Valve with 3 double acting spools with built in relief auxiliary Valves

Cylinders
Two double acting lift cylinders, two double acting steering cylinders and one double acting extension cylinder



Brakes
Service
Fully air operated S Cam dual brakes on front wheels and rear wheels. Brakes are actuated through a single pedal

Parking
Park Brake is pneumatically operated with spring actuated fail safe

SPECIFICATIONS

4X4 CITI F15



Standard Equipment

All Weather Cabin Unrestricted View

Drag winch

Turn & Reverse Lights

Front and rear work lights

Reflectors Front & rear view mirror

Tool kit

Rear View Mirror

Wiper motor

Gauges

Water Temperature.

Engine oil pressure.

Fuel Gauge

RPM meter cum hour recorder

Air pressure

Speedometer



Standard Safety Equipment

Avalon Load Moment Indicator for Pick & Carry Cranes - KOPS + CC

Audio overload indication

Hose failure protection

Safety brakes on hoist

Cylinder guards.

Rope Compensation for auto levelling

Reverse Hooter



Optional Equipment

Fly jib 2.6m

Over Hoist hydraulic cut-off

Fire extinguisher

Beacon Light

Spare Wheel

Air Conditioning

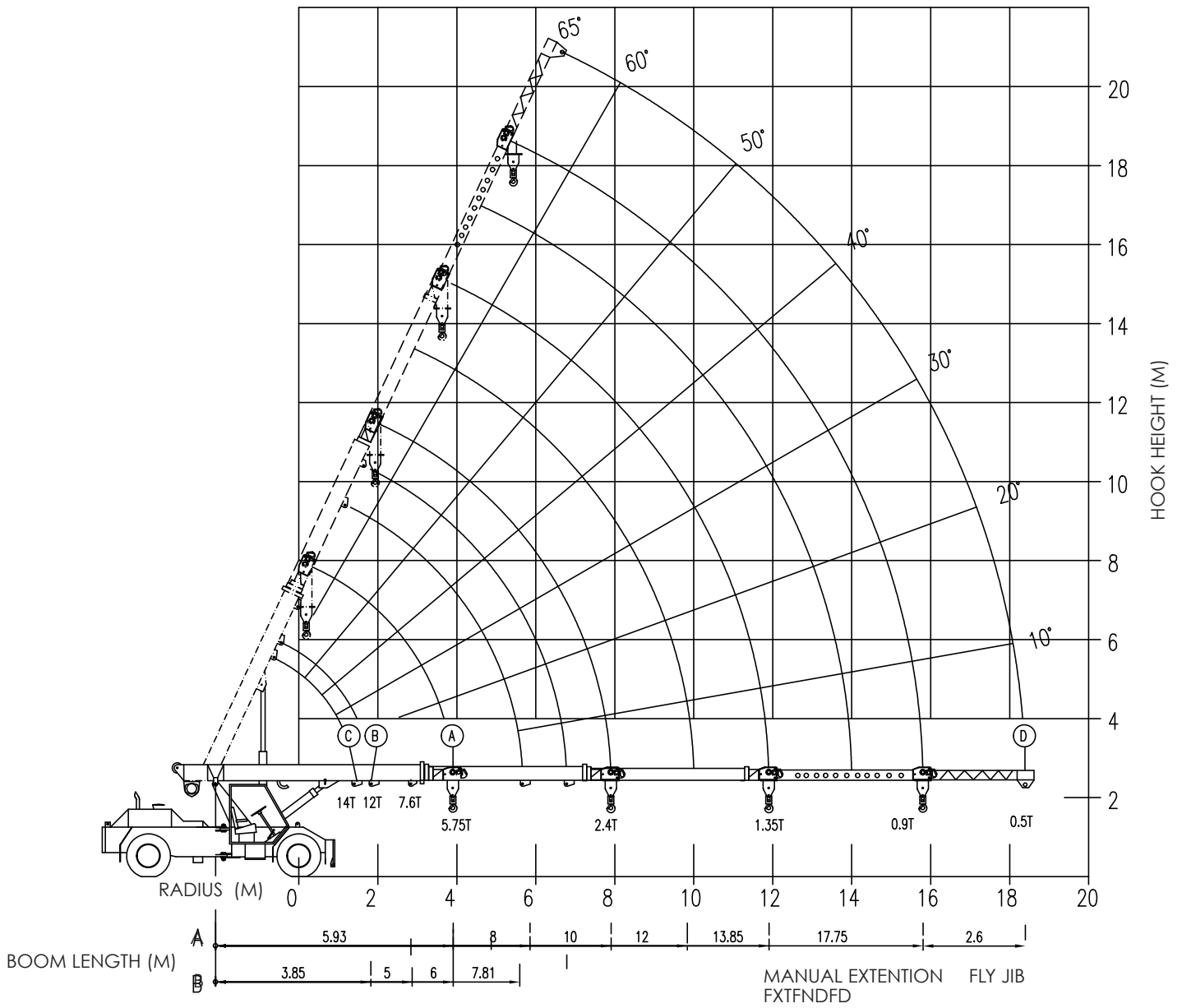
Wheel Chocks

25% Tint Windows

Tool/ Sling Box

We offer a full Range of certified standard slings, beams, grabs and lifting attachments as well as able to produce customised solutions for your application.

SAFE | STRONG | STURDY
4X4 CITI F15



LIFTING CAPACITY

4X4 CITI F15

RADIUS (M)	Ⓐ					
	BOOM LENGTH IN METRES - MANUAL EXTENSION RETRACTED					MANUAL EXTENSION EXTENDED
	5.93	8	10	12	13.85	17.75
2	7500	7500	7500			
3	7500	7500	6900	5200		
4	5750	5700	5070	4500	3970	
5		4400	4760	4000	3460	1680
6		3600	3525	3475	3100	1575
7			2900	2900	2750	1475
8			2400	2478	2400	1400
9				2130	2080	1320
10					1775	1250
11					1550	1180
12					1350	1135
13						1110
16						900
18						

Ⓑ			
BOOM PIVOT TO INNER LUG 1ST JIB EXTIN. MANUAL EXTIN. RETRACTED			
3.85	5	6	7.81
12000	11000	11000	10550
	7000	7000	6700
		4800	4750
			3570

Ⓒ	
14T LUG	
BOOM FULLY RETRACTED	
RADIUS (M)	S.W.L (KG)
1.5	14000

Ⓓ FLY JIB (BOOM FULLY EXTENDED)
750
750
700
700
600
650
600
500

- * RADIUS IS THE HORIZONTAL DISTANCE MEASURED FROM THE CENTRE OF FRONT WHEEL TO THE LOAD POINT.
- * S.W.L ARE BASED ON 75% STABILITY & AND STRENGTH.
- * S.W.L ARE BASED ON FIRM LEVEL GROUND WITH TYRES 11x20x16 PLY. INFLATED TO 115 PSI, WEIGHT OF HOOKS, BLOCKS, SLINGS & CHAIN ETC. INCLUDED.
- * LIFT & CARRY - THE S.W.L SHALL BE CARRIED WITH THE MINIMUM BOOM LENGTH & AS CLOSE TO THE GROUND AS POSSIBLE AT SPEEDS NOT IN EXCESS OF 2KMPH.

 **Toma Equipment**
 **@tomaequipment**
www.toma.co.za

SAFE | STRONG | STURDY
4X4 CITI F15